

WHAT'S NEW AT NEPTUNE TERMINALS?

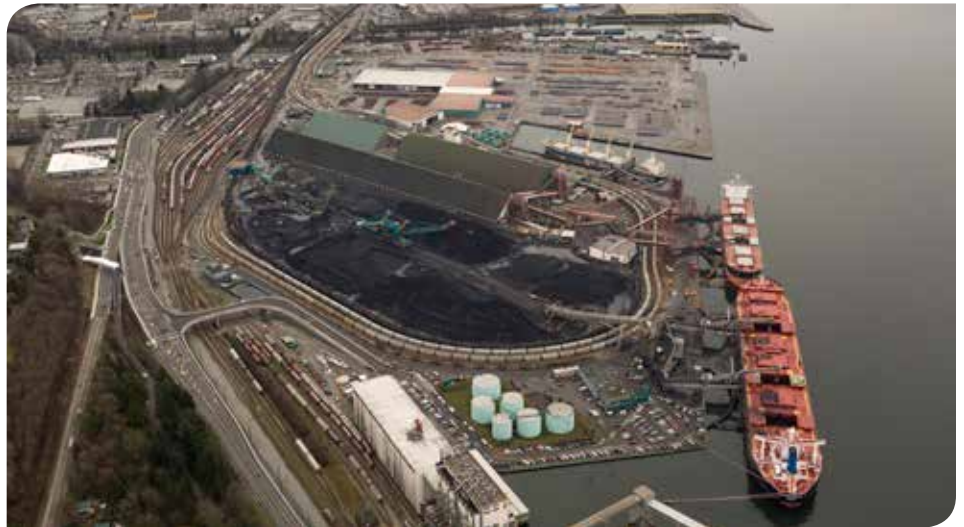
Neptune Terminals is helping support a strong, vibrant, sustainable community. Our philosophy is one of continuous improvement to manage and reduce any impact on the environment. We are committed to keeping residents and the community aware of our plans and sharing the most current activities with you.

CANOLA ON THE GO

Many of our neighbours will be familiar with the large blue tanks located on the northwest corner of our terminal. These tanks store semi-refined canola oil from Canada's prairie provinces before being shipped to markets worldwide. Canola oil is biodegradable vegetable oil used in food products.

In late spring to early summer, these tanks will be removed, as the canola oil will soon be handled by another Port Metro Vancouver terminal. Neptune will follow our strict environmental management procedures to ensure the activity takes place safely and responsibly.

What will replace the tanks? At this time, a decision has not been made about how to use the space. As Neptune has always done, we will update our neighbours when a decision has been made so you know what you can expect to see moving forward.



Aerial photo of Neptune with the new Low Level Road overpass

SPRAY POLE TESTING AND REPLACEMENT

As part of Neptune's commitment to continuous improvement, we will be replacing one of 13 spray poles with a new steel pole and wider spray crossbar. Once installed, we will be testing a variety of nozzles and water flows to ensure the optimal water

coverage for the terminal, while minimizing water use.

The testing is part of our efforts to enhance our existing system of spray poles and water guns, and to ensure our dust control systems use the best available proven technology.



LOW LEVEL ROAD OVERPASS

As many are aware, the Neptune – Cargill overpass is now complete and fully operational. In addition to the Low Level Road upgrades, the new overpass makes coming and going

to the terminal much safer, as our employees no longer have to cross an active and busy rail crossing to get to work each day. The overpass also provides a great view of Neptune, so

the next time you're on the Spirit Trail, cycling or walking past, we encourage you to stop and view our terminal in operation.

Interested in touring our terminal?

As a result of the road construction, Neptune's annual community open house was replaced with a series of weekend terminal tours. Hundreds of our neighbours took the opportunity to be welcomed onto the site and see the terminal up close. We look forward to seeing our neighbours at our open house later this year, but given the popularity – and wait lists – we'll be scheduling spring terminal tours. Dates will be posted on our website, or to sign up for email notification, please contact us at community_questions@neptuneterminals.com.



FEATURED COMMUNITY PARTNER: SALMONID SOCIETY

Neptune Terminals has been part of the communities on the North Shore for over 40 years and has built long-term relationships with many different community organizations. We believe it is important to share with residents the many good works our community partners provide for the North Shore.

We are excited to be supporting the Seymour Salmonid Society, a non-profit organization dedicated to preserving and enhancing the fish populations of the Seymour River.

Since its inception in 1987, the society has created over 40,000 square metres of habitat below the Seymour Falls dam to assist in the revitalization of the salmon population in the Seymour.

The society promotes environmental awareness and aims to educate British Columbians about the value of the Seymour River and salmonids. Gently Down the Seymour, the society's largest education program, gives elementary students a unique,

hands-on learning experience at the salmon hatchery and the opportunity to observe salmon in their natural habitat.

Like many community organizations, the society depends heavily on volunteers. Without their involvement, it would be impossible to achieve many of the society's objectives. North Shore residents interested in volunteering or visiting the hatchery should visit the society's website to learn more – seymoursalmon.com.



Looking for more information on Neptune?
Have a question?

E: community_questions@neptuneterminals.com
T: 604.983.7935

Neptune
TERMINALS

neptuneterminals.com